

# APOLLO AL1206

## “Panda” series

### HIGHLY DURABLE, ULTRA LIGHTWEIGHT



## Apollo Flexible Technology

Apollo develops and manufactures groundbreaking solutions and products in solar energy, destined to transform any surface under the sun into an electricity source.

Apollo Panda is specifically designed to fit any lightweight structure with load limits or curved surfaces.

↓ 80%

Reduction of total system weight

↓ 50%

Reduction of labor cost



#1 in efficiency per weight and durability

### CERTIFICATIONS AND TESTS

ISO9001:2015, Design, production, and marketing flexible solar panels, CE, IEC61215:2021, IEC61730:2016, ANSI/UL61215:2021, ANSI/UL61730:2017



### MAIN BENEFITS & KEY FEATURES



**Durable and Reliable**  
Patented cell technology with enhanced micro-cracks tolerant, IP68 rated



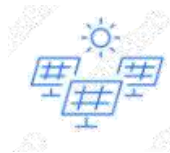
**Efficient**  
High energy yield due to 17.5% cell efficiency



**Ultra Lightweight**  
2.8 Kg/sqm, fits light structures with load limits



**Fast Deployment**  
Easy to transport, load, and install in various methods, with no additional construction and lower labor costs



**PID Free**  
No extra devices needed to mitigate PID in the PV array



**Aesthetic Design**  
Customizable color (full black, white or transparent), and mounting design

## ELECTRICAL SPECIFICATIONS

STC 1,000 W/sqm, (25 ± 2)°C, AM 1.5

Maximum Power (Pmax)	300 ±5%	W
Maximum Power Voltage (Vmp)	38	V
Maximum Power Current (Imp)	7.88	A
Open Circuit Voltage (Voc)	47.5 ±5%	V
Short Circuit Current (Isc)	8.6 ±5%	A
Maximum Series Fuse	15	A
Operating Temperature	(-40) – (+85)	°C
	(-40) – (+185)	°F
Temperature coefficient Isc (α)	0.057	%/°C
Temperature coefficient Voc (β)	-0.288	%/°C
Temperature coefficient Pmax (γ)	-0.423	%/°C
Maximum System Voltage	1000	Vdc

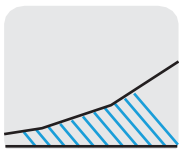
## MECHANICAL DATA

Cell Type	72 Apollo cells (6X12)
Dimensions (mm)	2020X1005X2.2 ,JB height- 14.8
(In)	(62.2X40.8X0.1 ,JB height- 0.58)
Weight , Kg (lb)	5.8 (12.7) ±5%
Max bending Diameter (mm)	1000 ± 5
(In)	39.37 ± 0.2
Junction Box	Front side, IP68 rated
Connector Type	Original MC4-EVO2
Output Cables	AL120610XXX-1 120cm AL120610XXX-2 20cm
	4mm <sup>2</sup> (12AWG) cross-section
Backside Material	PET
Frame	Framless module
Class (IEC 61730-1:2016)	Class II
Fire class (UL 61730, UL790)	C
Static load certification	2400 Pa

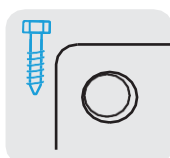
## PACKAGING CONFIGURATION

Modules per shipping box	6
Modules per pallet	60
Modules per 40' container	1320
Pallet dimensions LxWxH (mm)	2080X1080X1110
(In)	81.8X41.5X43.7
Pallet weight , Kg (lb)	498 (1097)

## CUSTOMIZABLE INSTALLATION TECHNIQUES

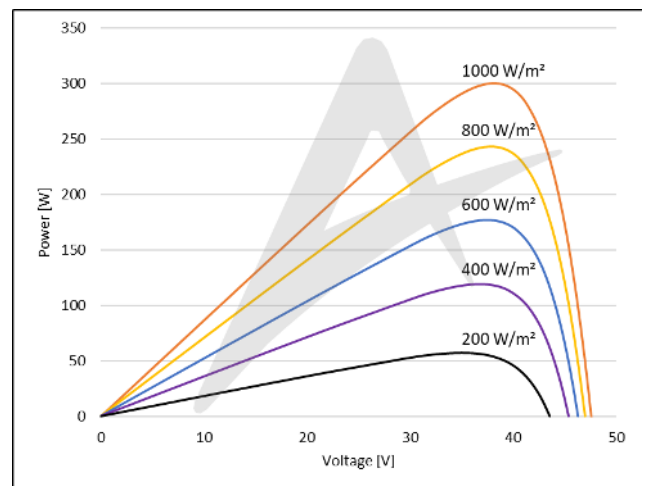
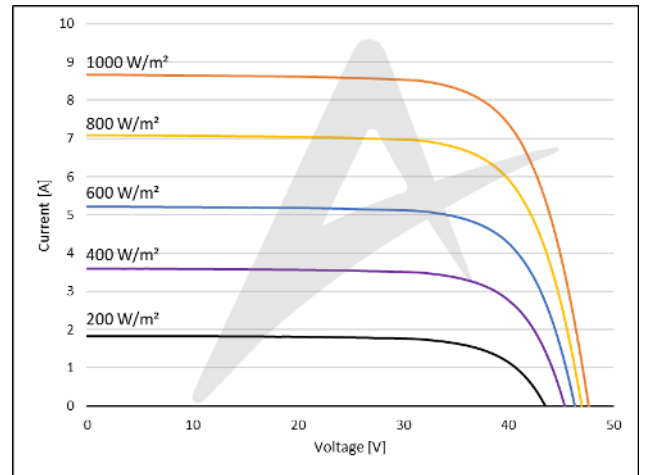
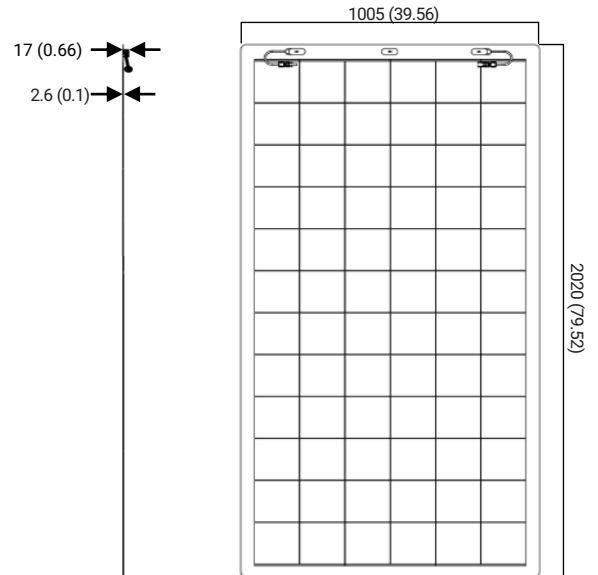


Durable Adhesive



Screws and studs

## ENGINEERING DRAWINGS mm (In)



## GUARANTEED POWER

